

THE AMERICAN GENERA OF ASILIDAE (DIPTERA): KEYS FOR IDENTIFICATION WITH AN ATLAS OF FEMALE SPERMATHECAE AND OTHER MORPHOLOGICAL DETAILS. VII.7. SUBFAMILY STENOPOGONINAE HULL —TRIBE CYRTOPOGONINI, WITH DESCRIPTIONS OF FOUR NEW GENERA AND ONE NEW SPECIES AND A CATALOGUE OF THE NEOTROPICAL SPECIES.\*

Los géneros americanos de Asilidae (Diptera): Claves para su identificación con un atlas de las espermatecas de las hembras y otros detalles morfológicos. VII.7. Subfamilia Stenopogoninae Hull —Tribe Cyrtopogonini, con descripción de cuatro nuevos géneros y una nueva especie y catálogo de las especies neotropicales.\*

JORGE N. ARTIGAS\*\* y NELSON PAPAVERO\*\*\*

ABSTRACT

A key for the identification of the 21 American genera of Cyrtopogonini (Asilidae, Stenopogoninae), with illustrations of female spermathecae and other morphological details, is given. The following new taxa are described: *Ivettea*, gen. n. (type-species, *Dasycyrtion minusculus* Artigas, 1970); *Lonquimayus*, gen. n. (type species, *Holopogon tener* Bigot, 1878); *Nothopogon triangularis*, gen. n., sp. n. (type-locality:

Argentina, Salta, El Carmen, 27 kms. s. Molinos); *Raulcortesia*, gen. n. (type-species *Dasycyrtion lanosus* Artigas, 1970). A catalogue of the neotropical species of Cyrtopogonini is added.

KEYWORDS: Insecta. Taxonomy. America. Key. Asilidae. Stenopogoninae. Cyrtopogonini.

RESUMEN

Se presenta una clave para la identificación de los 21 géneros americanos de Cyrtopogonini (Asilidae, Stenopogoninae), con ilustraciones de espermatecas y otros detalles morfológicos. Los siguientes nuevos taxones son descritos: *Ivettea*, gen. n. (especie-tipo, *Dasycyrtion minusculus* Artigas, 1970); *Lonquimayus*, gen. n. (especie-tipo, *Holopogon tener* Bigot, 1878); *Nothopogon triangularis*, gen. n., sp. n. (localidad-tipo: Argentina, Salta, El Carmen, 27 kms. s. Molinos). Se agrega un catálogo de las especies neotropicales de Cyrtopogonini.

PALABRAS CLAVES: Insecta. Taxonomía. América. Clave. Asilidae. Stenopogoninae. Cyrtopogonini.

\*This research was supported by the Fundação de Amparo à Pesquisa do Estado de São Paulo (Grants 85/1772-5, 86/3327-1 and 87/3170-8).

\*\*Universidad de Concepción. Facultad de Ciencias Biológicas y de Recursos Naturales—Departamento de Zoología (MZUC). Casilla 2407. Concepción-Chile. Proyecto Fondo Nacional Investigación Científica y Tecnológica. Gobierno de Chile: N° 92-0289 (Parte).

\*\*\*Museu de Zoologia & Instituto de Estudos Avançados, Universidade de Sao Paulo. Pesquisador do Conselho Nacional de Desenvolvimento Científico e Tecnológico (CNPq. Proc. N° 30. 0994/79).

INTRODUCTION

In this paper we complete the treatment of the American genera of Stenopogoninae. (Previous papers in Stenopogoninae, in this series, will be published as follows: Part. VII.1. (Stenopogoninae, key to tribes) in Gayana, Zool. 55(2); Part VII.2 (Stenopogoninae, tribes Acronychini, Bathypogonini, Ceraturgini) in Gayana, Zool. 55(3); Part. VII.3 (Stenopogoninae, tribes Dioctrini, Echthopodini) in Gayana, Zool. 55(4); Part VII.4 (Stenopogoninae, tribe Enigmomorphini) in Bol. Soc. Biol. Concepción, 62; Part VII.5 (Stenopogoninae, tribe Tillobromini) in Rev. Chilena Ent. 19; Part VII.6 (Stenopogoninae, tribes Plesiommatini, Stenopogonini and Willistonini) in Bol. Soc. Biol. Concepción 63. Part VII.7 (Stenopogoninae, tribe Cyrtopogonini) in Bol. Soc. Biol. Concepción, 62.

The other subfamilies have been published as:

- Part I (Introduction, key to subfamilies, subfamily Leptogastrinae) in Gayana, Zool., 52(1-2): 95-114. 1988.
- Part II (Dasypogoninae) in Gayana, Zool. 52(3-4): 199-260. 1988.
- Part III (Trigonimiminae) in Bol. Soc. Biol. Concepción, 60: 35-42. 1989.
- Part IV (Laphriinae, except Atomosiini) in Bol. Mus. Paraense Emilio Goeldi, Zool. 4(2): 211-255, 1989.
- Part V (Stichopogoninae) in Bol. Soc. Biol. Concepción, 61: 39-47, 1990.
- Part VI (Laphriinae, tribe Atomosini) in Gayana, Zool. 55(1): 53-87, 1991.

The methodology employed in the dissection and preservation of the male terminalia, female spermathecae and other morphological parts is the same employed by Artigas (1971).

Tribe CYRTOPOGONINI Artigas & Papavero

KEY TO GENERA:

- 1. Face flat or very evenly rounded ..... 2
  - Face decidedly gibbose or sometimes (*Sintoria*) higher near antennae ..... 13
- 2(1). Hairs normally dense, plumose, crinkly, on head, thorax and abdomen ..... 3
  - Hairs never plumose, even if very dense ..... 4
- 3(2). Hind tibiae much enlarged, as thick as or thicker than hind femur. CuA<sub>2</sub> and A<sub>1</sub> joined before wing margin, i. e., anal cell closed, with short pedicel. Male terminalia as in Figs. 1-3 and aedeagus as in Figs. 4-5. Spermathecae as in Figs. 6-7. (Nearctic) ..... *Holopogon* Loew, 1847.
  - Hind tibiae more slender, thinner than femur. Anal cell open. Spermathecae as in Figs. 8-9. (Nearctic) ..... *Heteropogon* Loew, 1847.
- 4(2). Disc of scutellum without fine, semierect pile, at most micropubescent ..... 5
  - Disc of scutellum with a variable number of fine, semierect pile ..... 11
- 5(4). Midtibia with a pair of moderately strong, black, ventral bristles at apex, directed approximately at an angle of 60-90°. Spermathecae as in Figs. 10-11. (Nearctic) ..... *Callinicus* Loew, 1872.
  - Midtibia with 3-5 bristles directed distally ..... 6

6(5). Pulvilli absent .....	7
Pulvilli present .....	8
7(6). Thorax, legs and pronotum and base of C with appressed white scale-like hairs. C continuing after CuA <sub>2</sub> + A <sub>1</sub> . Spermathecae as in Figs. 12-13. (Western USA).....	
..... <i>Ablautus</i> Loew, 1866.	
Thorax, legs, pronotum and base of C never with scale-like hairs. C evanescent after CuA <sub>2</sub> + A <sub>1</sub> . (Chile) .....	<i>Nothopogon</i> , gen. n.
8(6). Wing with 4 posterior cells (Fig. 34). Mesonotum with shining black spots, the rest of it gray. Abdomen at least in part reddish. Ambient vein absent after tip of M <sub>1</sub> . Spermathecae as in Figs. 18-19. (South-western USA) .....	<i>Itolia</i> Wilcox, 1936.
Wing with 5 posterior cells. Ambient vein after CuA <sub>2</sub> + A <sub>1</sub> present, evanescent or absent ..	9
9(8). Very small (2.8-3.6 mm) flies. Vertex tumid, not excavated. Ambient vein evanescent after CuA <sub>2</sub> + A <sub>1</sub> (Fig. 23). Male terminalia as in Figs. 24-26, aedeagus as in Fig. 27. Spermathecae as in Figs. 28-29. (Argentina, Chile) .....	<i>Ivettea</i> , gen. n.
Larger flies (5.5-8.0 mm). Vertex excavated. Ambient vein present or absent after CuA <sub>2</sub> + A <sub>1</sub> .....	10
10(9). Ambient vein clearly present after CuA <sub>2</sub> + A <sub>1</sub> . Face narrow. (Chile). .....	<i>Raulcortesia</i> , gen. n.
Ambient vein clearly absent after CuA <sub>2</sub> + A <sub>1</sub> (Fig. 33). Face wide (Fig. 31). Spermathecae as in Figs. 35-36. (Chile) .....	<i>Dasycyrtus</i> Philippi, 1865.
11(4). Five posterior cells present on wing .....	12
Only three sessile posterior cells on wing. Ambient vein ending in tip of M <sub>1</sub> . Mystax occupying entire face. Mesonotum and abdomen entirely black. Spermathecae as in Artigas (1971: fig. 45). (Chile) .....	<i>Dasypecus</i> Philippi, 1865
12(11). Face and frons narrow, lower face in anterior view narrower than half width of an eye. Mystax with a dense patch of short bristles in middle of lower margin and longer, less densely spaced bristles on remainder of face. Small black flies with sparse pollinosity on thorax and shining abdomen. (USA: Texas, Oklahoma) .....	<i>Hadrokolos</i> Martin, 1959.
Face widening below, lower face slightly wider than inferior width of an eye. Mystax not as above. Densely white-grey pollinose flies (including abdomen). Spermathecae as in Figs. 37-38. (Southwestern USA) .....	<i>Wilcoxia</i> James, 1941.
13(1). Thorax more or less flat, without a mane .....	14
Thorax strongly arched, with a conspicuous mane of hairs and bristles, at least on posterior half .....	20
14(13). Disc of scutellum, at least in part, with sparse to dense hairs or bristles .....	16
Disc of scutellum bare (at least at center), margin with 2-3 pairs of strong bristles .....	15
15(14). Midtibia at apex with a comb of 4-6 strong bristles. Mystax with bristles and hairs of about same length. Spermathecae as in Figs. 39-40. (Southwestern USA) .....	<i>Nannocyrtopogon</i> Wilcox & Martin, 1936
Midtibia never as above. Mystax variable. Spermathecae as in Artigas (1971: fig. 41). (Chile) .....	<i>Lonquimayus</i> , gen. n.

- 16(14). Flies not metallic colored. Hind tibia not more than 1.5 times diameter of fore and middle tibiae. Fore tibia only slightly tapered apically. Scutellum with strong marginal bristles and pile on disc either sparse or dense ..... 17  
Black flies with metallic blue or green shine. Hind tibia twice diameter of fore and middle tibiae. Fore tibia sharply tapering apically. Mesonotal declivity with long pile. Scutellum with semierect pile. (USA: California. Arizona, Utah, Texas; México; Baja California)..... *Sintoria* Hull, 1962.
- 17(16). Body and coxae, rest of legs excepted, entirely white-grey pollinose. Spermathecae as in Artigas (1971: fig. 44). (Chile) ..... *Graptostylus* Hull, 1962.  
Body never as above ..... 18
- 18(17). Middle tibia at apex with a comb of about 5 strong black spines. Abdomen totally pollinose or either one margin or both anterior and posterior margins of tergites pollinose ..... 19  
Middle tibia at apex with only two strong bristles. Tergites 3-5 with pollinose markings on the anterior margin but not laterally, and on the lateroposterior corners but not dorsally. Scutellar disc with sparse pile; long marginal scutellar bristles present. Pedicel with 2 and scape with 1 noticeable strong bristles. (USA: California, New Mexico) .....  
..... *Backomyia* Wilcox & Martin, 1957.
- 19(18). Weak dorsocentral and acrostical bristles on mesonotal declivity. Mesonotum with strong lateral bristles and slightly prominent short bristles covering most of the thoracic dorsum. Face moderately gibbose to the antennae. Large (over 20 mm) vespid mimics, abdomen predominantly striped and banded with yellow. (USA: California) .....  
..... *Pritchardomyia* Wilcox, 1965.  
Thoracic vestiture pile-like, except lateral bristles, some species almost bare on thorax. Face more strongly gibbose almost to the antennae. Flies not marked at abdomen. Length under 20 mm. Spermathecae as in Figs. 46-47. (Nearctic).  
..... *Cyrtopogon* Loew, 1847.
- 20(13). Scutellum with sparse short to long pile on disc, two strong long bristles at margin. Vein "R<sub>3</sub>" (reactivation of field of R<sub>3</sub>) present as a stump vein. Face produced at lower margin, triangular in profile. Spermathecae as in Figs. 48-49. (Western USA) .....  
..... *Metapogon* Coquillett, 1904.  
Scutellar disc with dense long wrinkly hairs and long slender marginal bristles. "R<sub>3</sub>" stump absent. Face strongly produced in profile. Spermathecae as in Figs. 50-51. (Nearctic).  
..... *Eucyrtopogon* Curran, 1923.

Genus *Ablautus* Loew

*Ablautus* Loew, 1866: 37 (Cent. 7, N° 63). Type-species, *trifarius* Loew (mon.).

*Ablautatus*, error or emend.

*flavipes* Coquillett, 1904: 178. Type-locality: USA, California. Distr. — USA, México (Durango).

*trifarius* Loew, 1866: 36 (Cent. 7, N° 63). Type-locality: USA, California, Distr. — USA, ?México (Osten Sacken, 1887: 168).

Genus *Dasycyrton* Philippi

*Dasycyrton* Philippi, 1865: 701. Type-species, *gibbosus* Philippi (mon.).

*arrayanensis* Artigas, 1970: 93, figs. 70, 83, 478. Type-locality: Chile, Santiago, Arrayán, Distr. — Chile (Bío-Bío, Santiago). HT MZUC.

*coquimbensis* Artigas, 1970: 95, figs. 78, 477. Type-locality: Chile, Coquimbo, Illapel. HT MZUC.

*gibbosus* Philippi, 1865: 701, pl. 26, figs. 30, 30a. Type-locality: Chile, Santiago and Aconcagua: Hacienda Catemu. Distr. — Chile (Coquimbo, Santiago). Ref. Artigas, 1970: 97, figs. 82, 407, 492. NT MZUC.

*medinae* Artigas, 1970: 99, fig. 86. Type locality: "Chile". HT SANT.

*sucinopedis* Artigas, 1970: 105, figs. 80, 480. Type-locality: Chile, Valparaíso. HT MZUC.

Genus *Dasypecus* Philippi

*Dasypecus* Philippi, 1865: 692. Type-species, *heteroneurus* Philippi (Hull, 1962: 139).

*heteroneurus* Philippi, 1865: 692, pl. 28, figs. 54, 54a, 54b. Type-locality: "Chile". Distr. — Chile (Coquimbo, Santiago). Ref. — Artigas, 1970: 110, figs. 63, 64, 66, 463). NT BMNH.

?*latus* (Philippi), 1865: 686 (*Dasypogon*). Type-locality: Chile, Illapel. HT lost.

Genus *Graptostylus* Hull

*Graptostylus* Hull, 1962: 207. Type-species, *dolosus* Hull (orig. des.).

*dolosus* Hull, 1962: 208. Type-locality: Chile, Valparaíso. Distr. — Chile (Coquimbo, Santiago). Ref. — Artigas, 1970: 119, figs. 65, 67, 68, 69, 71, 74, 457). HT USNM.

Genus *Heteropogon* Loew

*Dasypogon*, subg. *Heteropogon* Loew, 1847: 488. Type-species, *manicatus* Meigen (Back, 1909: 318).

*Anisopogon* Loew, 1874: 377 (unjustified nom. nov. for *Heteropogon* Loew). Type-species, *Dasypogon manicatus* Meigen (aut.).

*Dasypogon* subg. *Pycnopogon* Loew, 1847: 526. Type-species, *mixtus* Loew (Rondani, 1856: 157).

*dejectus* (Williston), 1901: 306 (*Holopogon*). Type-locality: Mexico, Guerrero, Venta de Zopilote. TP BMNH.

*divisus* (Coquillett), 1902: 139 (*Pycnopogon*). Type-locality: Mexico, Chihuahua. TP USNM.

*dorothyae* Martin, 1962: 373. Type-locality: Mexico, Guerrero, 32 mi. n. of Chilpancingo. Distr. — Mexico (Guerrero, Morelos). TP KU.

*rejectus* Williston, 1901: 307. Type-locality: Mexico, Guerrero, Venta de Zopilote. TP BMNH.

*spatulatus* Pritchard, 1935: 5. Type-locality: USA, Arizona. Distr. — USA, Mexico (Sonora). TP MIN.

*willisoni* Martin, 1962: 375. Type-locality: Mexico, Morelos, Highway 136, near Cuernavaca. Distr. — Mexico (Morelos, Guerrero). TP KU.

Genus *Holopogon* Loew

*Dasypogon*, subg. *Holopogon* Loew, 1847: 473.

Type-species, *nigripennis* Meigen (Coquillett, 1910: 552).

*Ceraturgus* Wiedemann of Rondani, 1856: 156, misident.

*currani* Martin, 1959: 17. Type-locality: USA, Arizona, Winona: Distr. — USA, Mexico (Sonora). HT AMNH.

*fisheri* Martin, 1967: 195. Type-locality: Mexico, Coahuila, Saltillo, Canyon de la Carbonera. HT CAS.

*pulcher* Williston, 1901: 306, pl. 5, fig. 18. Type-locality: Mexico, Guerrero, Venta de Zopilote. Distr. — Mexico (Guerrero, Morelos). TP BMNH.

*violaceus* Williston, 1901: 306, pl. 5, fig. 17. Type-locality: Mexico, Guerrero, Venta de Zopilote. TP BMNH.

Genus *Itolia* Wilcox

*Itolia* Wilcox, 1936: 201. Type-species, *maculata* Wilcox (orig. des.).

*atripes* Wilcox, 1949: 193. Type-locality: USA, Arizona, Mohawk. Distr. — USA, Mexico (Sonora).

*fascia* Martin, 1966: 213. Type-locality: Mexico, Puebla, Petlalcingo. HT UCD.

*maculata* Wilcox, 1936: 202. Type-locality: USA, Arizona, Santa Rita Mts. Distr. — USA, Mexico (Sonora).

*pilosa* Martin, 1966: 214. Type-locality: Mexico, Sonora, Vicam. HT CAS.

Genus *Ivettea*, gen. n.

Differs from *Dasycyrtion* Philippi by having the vertex tumid, large, unexcavated, and by the very small size (2.8-3.6 mm). From *Raulcortesia*, gen. n., it differs by having the ambient vein absent after  $CuA_2 + A_1$ .

Type-species, *Dasycyrtion minusculus* Artigas, 1970.

This genus is dedicated to Mrs. Ivette de Artigas.

*Ivettea minuscula* (Artigas), n. comb.

*Dasycyrtion minusculus* Artigas, 1970: 101, figs. 77, 425. Type-locality: Chile, Linares, El Radal. Distr. — Chile (Linares, Valdivia). HT MZUC.

Genus *Lonquimayus*, gen. n.

Face gibbose up to the antennae (Fig. 41), wide (Fig. 42). Antenna as in Fig. 43. Thorax more or less flat, without a mane; disc of scutellum bare (at least at center), margin with 2-3 pairs of strong bristles.

Differs from all other genera of Cyrtopogonini from Chile by the gibbose face; from *Graptostylus*, which also has a gibbose face, by not having the body and legs entirely white-grey pollinose

Type-species, *Holopogon tener* Bigot, 1878.

The name of this genus refers to the locality of Lonquimay-Chile.

List of species:

*notocinereatus* (Artigas), 1970: 102, figs. 85, 494 (*Dasycyrtion*). Type-locality: Chile, Malleco, Angol. HT MZUC. N. COMB.

*papaveroi* (Artigas), 1970: 104, figs. 81, 491 (*Dasycyrtion*). Type-locality: Chile, Bio Bio, Los Angeles, Fundo San José. Distr. — Chile (Bio Bio, Cautín, Malleco). HT MZUC. N. COMB.

*tener* (Bigot), 1878: 437 (*Holopogon*). Type-locality: "Chile". Distr. — Chile (Arauco, Concepción, Malleco, Ñuble, Santiago). Ref. — Artigas, 1970: 107 (as *Dasycyrtion*; figs. 72, 73, 75, 76, 84, 487). NT MZUC. N. COMB.

Genus *Metapogon* Coquillett

*Metapogon* Coquillett, 1904: 181. Type-species, *gilvipes* Coquillett (orig. des.).

*leechi* Wilcox, 1964: 197. Type-locality: Mexico, Baja California, Misión San Javier. HT CAS.

Genus *Nothopogon*, gen. n.

Head 1/5 width of head, wider at oral margin. Width of frons similar to that of face. Facial gradually sloping from base of antennae to oral margin. Frontal hairs scattered, finer than those of mystax, similar to the ocellar hairs. Mystax with fine and long hairs, occupying entire face (Figs. 14-15). Postvertical and postocular hairs fine, on lower postocular area wrinkled on apical half. Antennae placed on upper 1/3 of face; scape longer than pedicel, shining; pedicel short, globose, with abundant micropilosity, both with dorsal and ventral bristles, the ventral ones longer and thicker; first flagellomere mostly cylindrical, attenuate towards apex, with a minute spine on the basal 1/3 of the dorsal surface; second flagellomere minute; third flagellomere half the length of the first, compressed, pointed (Fig. 15). Proboscis short, cylindrical, blunt. Palpus small, the second segment rounded at apex.

Pronotum and propleura with hairs similar to the hairs of beard. Prosternum dissociated from proepisternum. Mesonotum partially covered with micropilosity; fine long hairs scattered all over mesonotum; dorsocentral bristles indistinct; humeral, postalar and postcallar bristles fine, hair-like, similar to mesonotal hairs. Disc of scutellum with a few fine hairs and 3 pairs of marginal scutellar bristles. Mesopleura with fine long hairs. Anepisternum bare. Mesepisternum with stiff short hairs. Katepisternum with abundant fine and long hairs, wrinkled on apical half.

Legs of similar size, tibiae and basitarsi with long bristles. Claws acute, pulvilli absent.

Wing with cell  $r_1$  open; vein  $R_4$  straight on apical 3/4, ending at wing apex; vein  $R_5$  straight, ending behind apex of wing; cell  $m_3$  open; anal

cell closed. Ambient vein absent from  $CuA_2 + A_1$ .

Abdomen mostly depressed, as wide as thorax, integument smooth, shining; micropubescence forming well defined pattern; vestiture of abdomen consisting in fine, scattered, short hairs. Eight tergites visible in female (male unknown). Ovipositor with spines on acanthophorites.

The name of this genus refers to the abundant hair on the pronotum.

Type-species, *Nothopogon triangularis*, sp. n.

*Nothopogon triangularis*, sp. n.

Body length, 4.5 mm; wing length, 3.2 mm.

Face and frons with silvery micropilosity. Mystax with white hairs, extending from base of antennae to oral margin. Frontal bristles fine, white. Frons with scattered, very fine, white hairs, similar to hairs of ocellar triangle. Postvertical bristles white, reclinate. Hairs and bristles of postocular area white, longer on lower part, similar to the hairs of beard and proboscis. Scape shining black, with white bristles; pedicel covered with silvery micropilosity, its bristles white; flagellomeres black. Proboscis shining black.

Prothorax shining black, covered with silvery micropilosity and long, fine, white hairs. Bristles on collar strong, whitish. Mesonotum shining black, with large areas covered with silvery micropubescence; a double central stripe and two spots at each side of mesonotal disc free from micropubescence, shining black, contrasting strongly with the surrounding areas. Mesonotal disc covered entirely with scattered, long, fine, white hairs; the white dorsocentral bristles visible only on postsutural area. Humeral, prealar, postalar and postcallar bristles white, the postcallars longer and stronger. Disc of scutellum covered with micropubescence similar to that of mesonotum, 3 pairs of white, long, marginal scutellars present. Mesopleura black with large areas of silvery micropubescence; hairs white. Katepimeral bristles white. Anepisternum bare, only micropubescent. Mesepisternum with a dense patch of short, stiff, downward directed hairs.

Wing hyaline, veins brownish.

Coxae blackish, with abundant silvery micropubescence and white bristles. Femora shining black with white hairs and bristles, longer on ventral surface. Tibiae and tarsi light-brown, with short, white hairs and long bristles. Claws only a little curved; pulvilli absent.

Abdomen shining black, covered in part by silvery micropubescence. First tergite almost completely shining black, tergites 2-6 with a distinct, large, triangular area (shining black) surrounded by micropubescence. Sides of tergites with a small spot under similar conditions. Vestiture of abdomen consisting of short, white, scattered hairs. Ovipositor with black spines on acanthophorites.

**Holotype** ♀, ARGENTINA, SALTA: El Carmen, 27 km s. Molinos, 1900 m, 6.x.1968 (L. Peña), in the MZUC.

The name *triangularis* refers to the triangular area, shining black, on tergites 2-6.

#### Genus *Raulcortesia*, gen. n.

Differs from *Dasycyrtion* Philippi by the narrower face and by the fact that the ambient vein is clearly seen after  $CuA_2 + A_1$ . From *Ivettea*, gen. n., it differs in the excavated vertex.

Type-species, *Dasycyrtion lanosus* Artigas, 1970.

The generic name represents a homage to Prof. Raúl Cortés Peña, in recognition to his many contributions to Entomology.

#### *Raulcortesia lanosa* (Artigas), n. comb.

*Dasycyrtion lanosus* Artigas, 1970: 98, figs. 79, 490. Type-locality: Chile, Curicó, Palos Negros. HT MZUC.

#### Genus *Sintoria* Hull

*Sintoria* Hull, 1962: 197. Type-species, *emeralda* Hull (orig. des.).  
Ref. — Wilcox, 1972.

*emeralda* Hull, 1962: 199. Type-locality: Mexico, Neplanta. Distr. — Mexico (Jalisco, Aguascalientes). HT USNM.

*lagunae* Wilcox, 1972: 55. Type-locality: Mexico, Baja California Sur, S. Victoria, La Laguna, HT LACM.

*rossi* Wilcox, 1972: 58. Type-locality: Mexico, Mt. Popocatepetl, north slope, 11,000 ft. HT CAS.

#### Unrecognized Cyrtopogonini

*bullatus* Wulp, 1882: 100 (*Holopogon*). Type-locality: "Argentina".

#### REFERENCES

- Artigas, J. N., 1970. Los asilidos de Chile (Diptera — Asilidae). *Gayana (Zool.)* 17: 1-472, 504 figs.
- Artigas, J. N., 1971. Las estructuras quitinizadas de la spermatheca y funda del pene de los asilidos y su valor sistemático a través del estudio por taxonomía numérica. *Gayana (Zool.)* 18: 1-106, 138 figs.
- Back, E. A., 1909. The robber-flies of America north of Mexico, belonging to the subfamilies Leptogastrinae and Dasypogoninae. *Trans. Am. ent. Soc.* 35: 137-400, 11 pls.
- Bigot, J. M. F., 1878. Dipteres nouveaux ou peu connus. 10e. partie. XV. Tribu des Asilidi. *Curies des Laphridae et Dasypogonidae*. *Ann. Soc. ent. France (5)* 8: 213-240, 401-446.
- Coquillett, D. W., 1902. New orthorrhaphous Diptera from Mexico and Texas. *J. N. Y. ent. Soc.* 10: 136-141.
- Coquillett, D. W., 1904. New North American Diptera. *Proc. ent. Soc. Wash.* 6: 90-98.
- Coquillett, D. W., 1910. The type-species of North American genera of Diptera. *Proc. U. S. natl Mus.* 37 (Nº 1.719): 499-647.
- Hull, F. M., 1962. Robber flies of the world. The genera of the family Asilidae. *Smithson. Instn Bull.* 224(1): 1-432, (2): 433-907, 2536 figs.
- Loew, H., 1847. Ueber die europäischen Raubfliegen (Diptera — Asilica). *Linnaea ent.* 2: 384-568, 587-591.
- Loew, H., 1866. *Diptera Americae Septentrionalis indigena*. *Centuria septima*. Berlin. *ent. Z.* 10: 1-54.

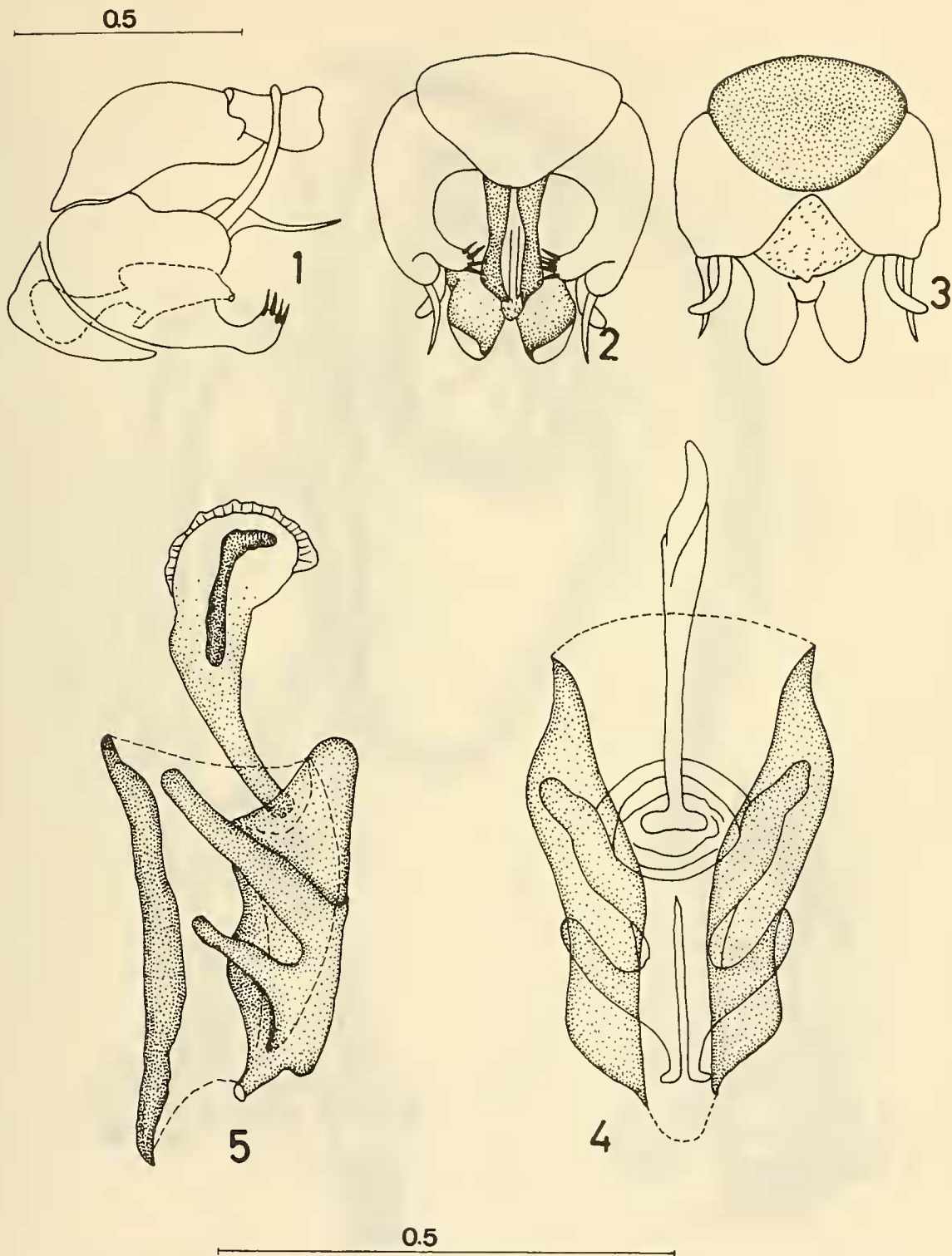


- Loew, H., 1874. Neue nordamerikanische Dasygogonina. Berlin. ent. Z. 18: 353-377.
- Martin, C. H., 1959. The *Holopogon* complex of North America, excluding Mexico, with descriptions of a new genus and subgenus (Diptera, Asilidae). Am. Mus. Novit. 1980: 1-40, 21 figs.
- Martin, C. H., 1962. The plumose hairs of *Heteropogon* and two new species from Mexico (Diptera: Asilidae). J. Kans. ent. Soc. 35(2): 247-253.
- Martin, C. H., 1966. New Asilidae from Mexico in the genera *Itolia* and *Sphageus* (Diptera). Pan-Pacific Ent. 42: 212-218, 8 figs.
- Martin, C. H., 1967. New Asilidae from Mexico and Arizona (Diptera). Pan-Pacific Ent. 43: 193-201, 4 figs.
- Osten Sacken, C. R., 1887. Diptera, pp. 129-160, 161-176, 177-208, 209-216, pl. 3, in F. D. Godman & O. Salvin, eds., Biología Centrali-Americana. Zoologia-Insecta-Diptera 1: 378 pp., 6 pls. London.
- Philippi R. A., 1865. Aufzählung der chilenischen Dipteren. Verh. Zool.-Bot. Ges. Wien 15: 595-782.
- Pritchard, A. E., 1935. New Asilidae from the southwestern United States (Diptera). Am. Mus. Novit. 813: 1-13.
- Rondani, C., 1856. Dipterologiae italicae prodromus. Vol. 1. Genera italica ordinis dipterorum ordinatim disposita et in familias et stirpes aggregata, 228 pp. Parma.
- Wilcox, J., 1936. Asilidae, new and otherwise, from the Southwest, with a key to the genus *Stictopogon* (sic). Pan-Pacific Ent. 12: 201-212, 1 fig.; 13(1937; cont.): 37-45, 1 fig.
- Wilcox, J., 1949. The genus *Itolia* Wilcox (Diptera: Asilidae). Pan-Pacific Ent. (1948) 24: 191-193.
- Wilcox, J., 1964. The genus *Metapogon* (Diptera: Asilidae). Pan-Pacific Ent. 40(3): 191-200.
- Wilcox, J., 1972. The genus *Sintoria* Hull (Diptera: Asilidae). Pan-Pacific Ent. 48(1): 51-58.
- Williston, S. W., 1901. Supplement (part), pp. 249-264, 265-272, 273-296, 297-328, 329-332, pls. 4-5, pl. 6, figs. 1-6, in F. D. Godman & O. Salvin, eds., Biología Centrali-Americana. Zoologia-Insecta-Diptera 1: 378 pp., 6 pls. London.
- Wuisp, F. M. van der, 1882. Amerikaansche Diptera. Tidschr. Ent. 25: 77-163, pls. 9-10.

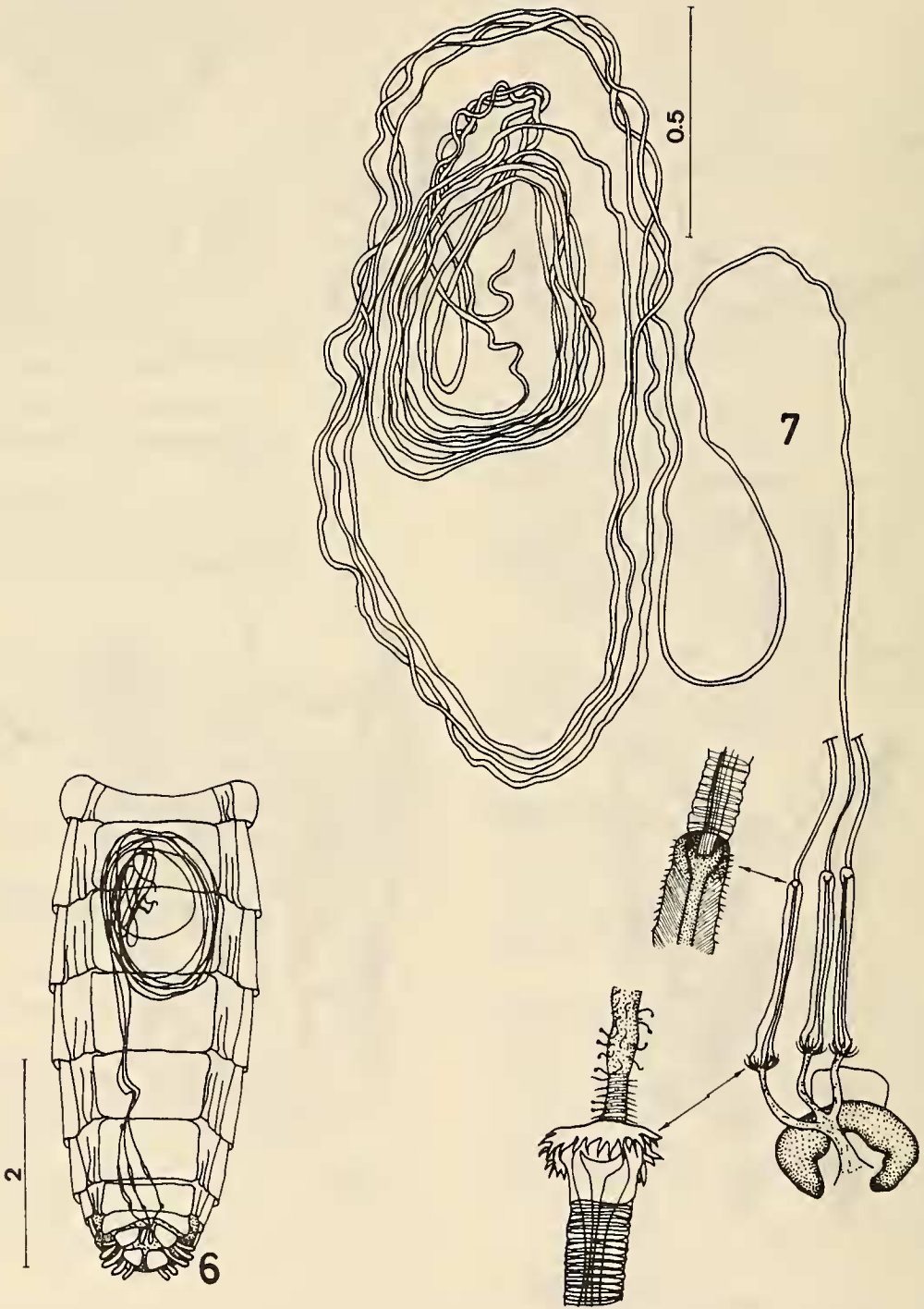
## INDEX

(Synonyms in *italics*)

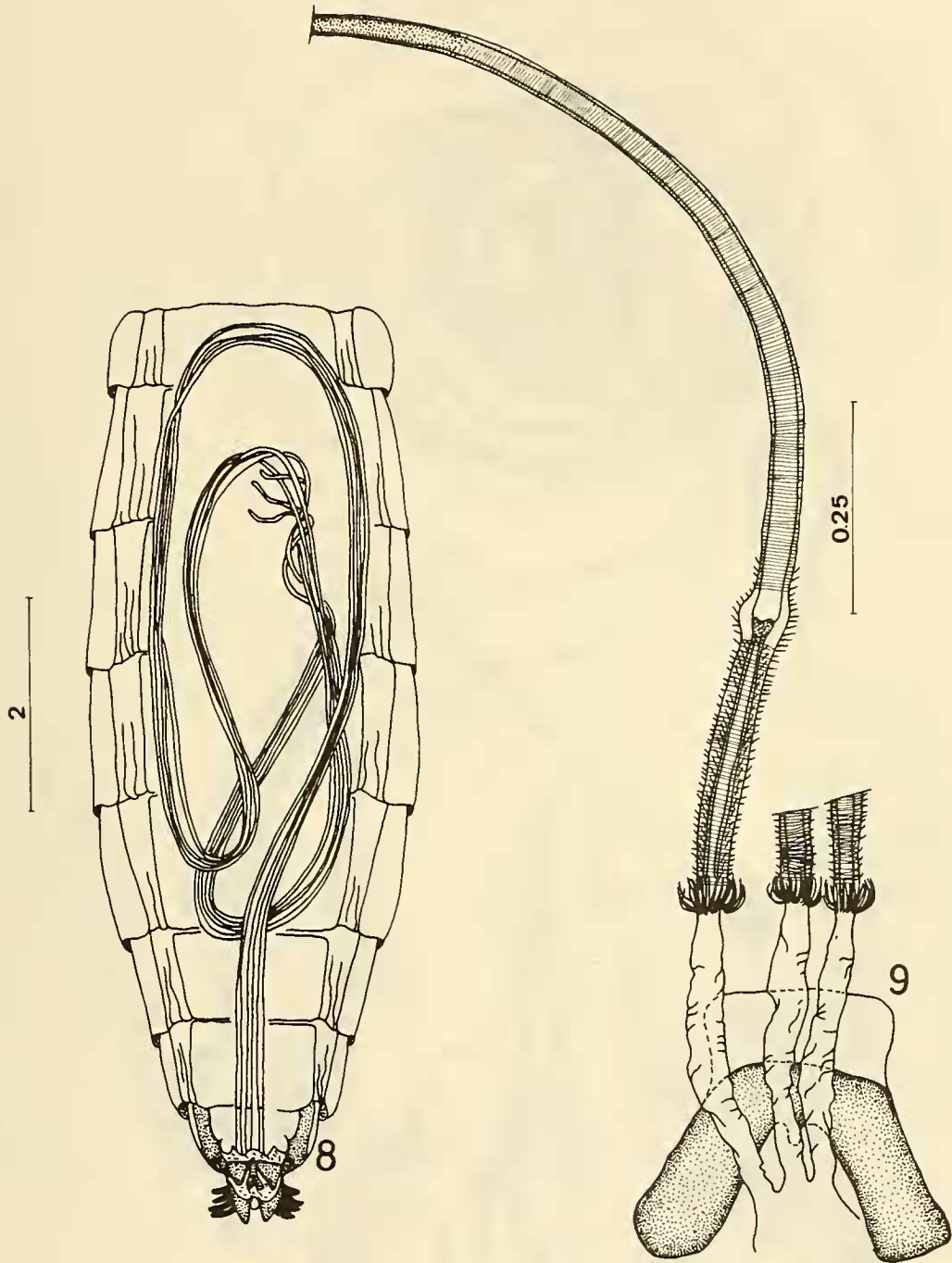
- Ablautatus*, error or emend: 59  
*Ablautus* Loew, 1866: 57, 59  
*Anisopogon* Loew, 1874: 59  
arrayanensis Artigas, 1970, *Dasycyrton*: 59  
atripes Wilcox, 1949, *Itolia*: 60
- Backomyia* Wilcox & Martin, 1957: 58  
bullatus Wulp, 1882 (*Holopogon*): 62
- Callinicus* Loew, 1872: 56  
*Ceraturgus* Wiedemann of Rondani, 1856: 60  
coquimbensis Artigas, 1970, *Dasycyrton*: 59  
currani Martin, 1959, *Holopogon*: 60  
*Cyrtopogon* Loew, 1847: 58
- Dasycyrton* Philippi, 1865: 59, 60, 62  
*Dasypecus* Philippi, 1865: 57, 59  
dejectus (Williston), 1901 (*Holopogon*), *Heteropogon*: 59  
divisus (Coquillett), 1902 (*Pycnopogon*), *Heteropogon*: 59  
dolosus Hull, 1962, *Graptostylus*: 59  
dorothyae Martin, 1962, *Heteropogon*: 59
- emeralda Hull, 1962, *Sintoria*: 62  
*Eucyrtopogon* Curran, 1923: 58
- fascia Martin, 1966, *Itolia*: 60  
fisheri Martin, 1967, *Holopogon*: 60  
flavipes Coquillett, 1904, *Ablautus*: 59
- gibbosus Philippi, 1865, *Dasycyrton*: 59  
*Graptostylus* Hull, 1962: 58, 59, 60
- Hadrokolos* Martin, 1959: 57  
heteroneurus Philippi, 1865, *Dasypecus*: 59  
*Heteropogon* Loew, 1847: 59  
*Holopogon* Loew, 1847: 56, 59, 60
- Itolia* Wilcox, 1936: 57, 60  
*Ivettea*, gen. n.: 60
- lagunae Wilcox, 1972, *Sintoria*: 62  
lanosa (Artigas), 1970 (*Dasycyrton*), *Raulcortesia*: 62  
?latus (Philippi), 1865 (*Dasypogon*), *Dasypecus*: 59  
leechi Wilcox, 1964, *Metapogon*: 61  
*Lonquimayus*, gen. n.: 57, 60
- maculata Wilcox, 1936, *Itolia*: 60  
medinae Artigas, 1970, *Dasycyrton*: 59  
*Metapogon* Coquillett, 1904: 58, 61  
minuscula (Artigas), 1970 (*Dasycyrton*), *Ivettea*: 60
- Nannocyrtopogon* Wilcox & Martin, 1936: 57  
*Nothopogon*, gen. n.: 57, 61  
notocinereatus (Artigas), 1970 (*Dasycyrton*),  
*Lonquimayus*: 60
- papaveroi (Artigas), 1970 (*Dasycyrton*), *Lonquimayus*: 60  
pilosa Martin, 1966, *Itolia*: 60  
*Pritchardomyia* Wilcox, 1965: 58  
pulcher Williston, 1901, *Holopogon*: 60  
*Pycnopogon* Loew, 1847: 59
- Raulcortesia*, gen. n.: 57, 60, 62  
rejectus Williston, 1901, *Heteropogon*: 59  
rossi Wilcox, 1972, *Sintoria*: 62
- Sintoria* Hull, 1962: 58, 62  
sucinopedis Artigas, 1970, *Dasycyrton*: 59  
spatulatus Pritchard, 1935, *Heteropogon*: 59
- tener (Bigot), 1878 (*Holopogon*), *Lonquimayus*: 60  
triangularis, sp. n., *Nothopogon*: 61  
trifarius Loew, 1866, *Ablautus*: 59
- violaceus Williston, 1901, *Holopogon*: 60
- Wilcoxia* James, 1941: 57  
willistoni Martin, 1962, *Heteropogon*: 59



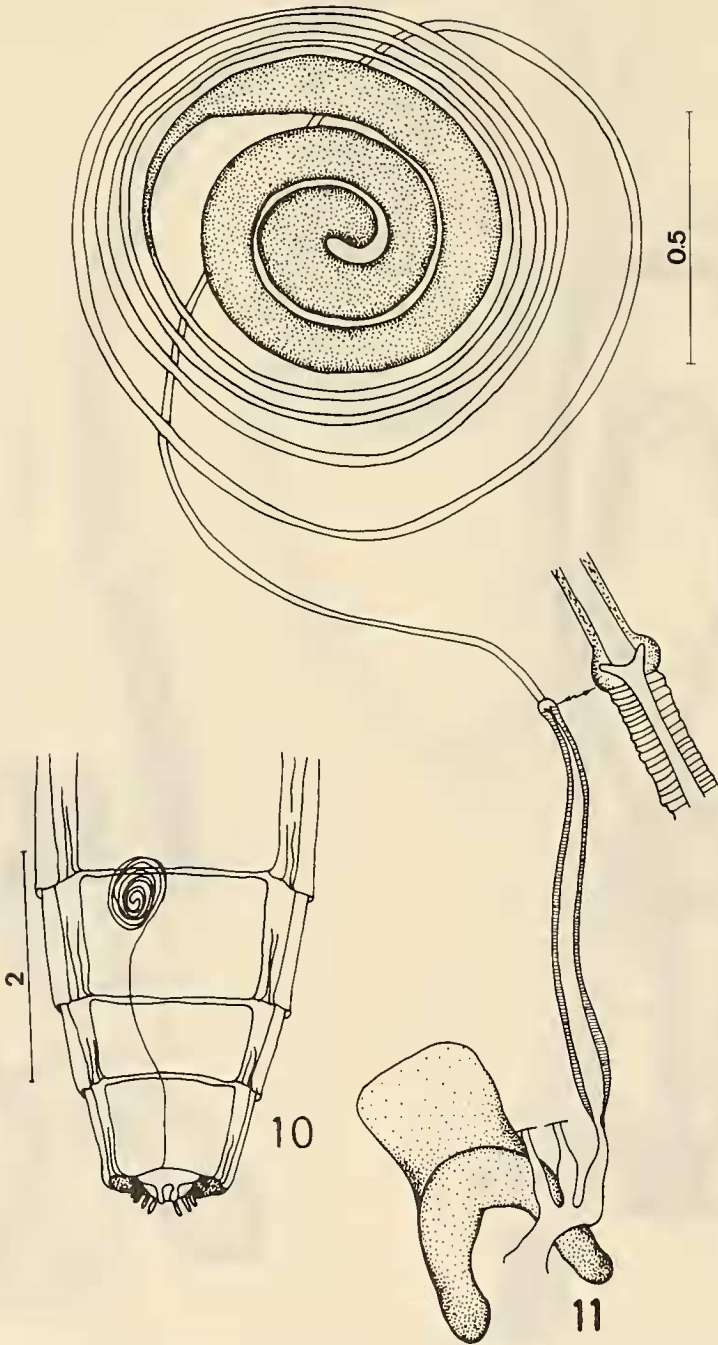
FIGS. 1-5. *Holopogon nigripennis* (Meigen). 1-3, male terminalia in lateral, ventral and dorsal views. 4-5, aedeagus in dorsal and lateral views. (scales in mm).



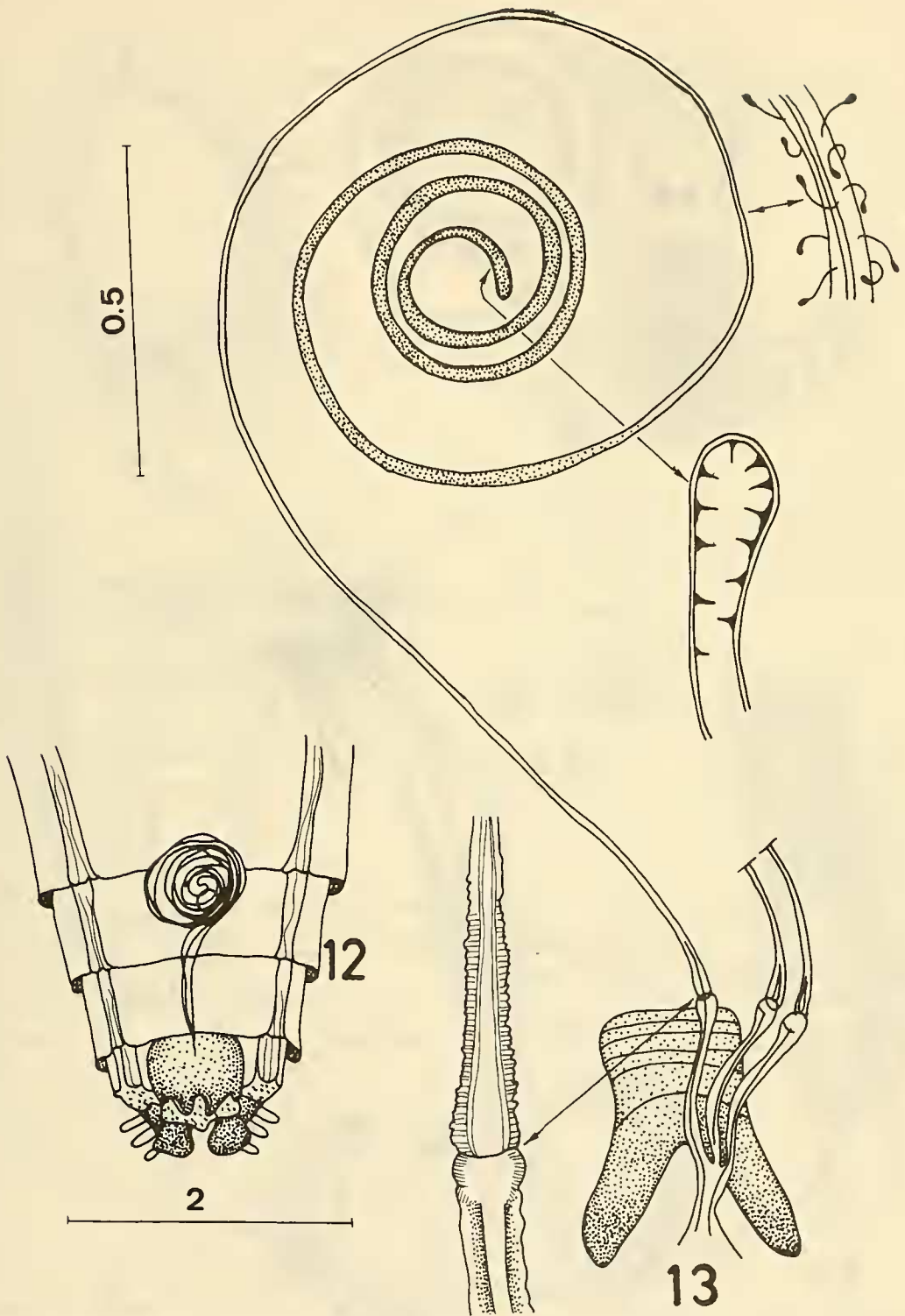
FIGS. 6-7. *Holopogon phaeonotus* Loew. 6, situation of the spermathecae in the abdomen. 7, spermathecae. (scales in mm).



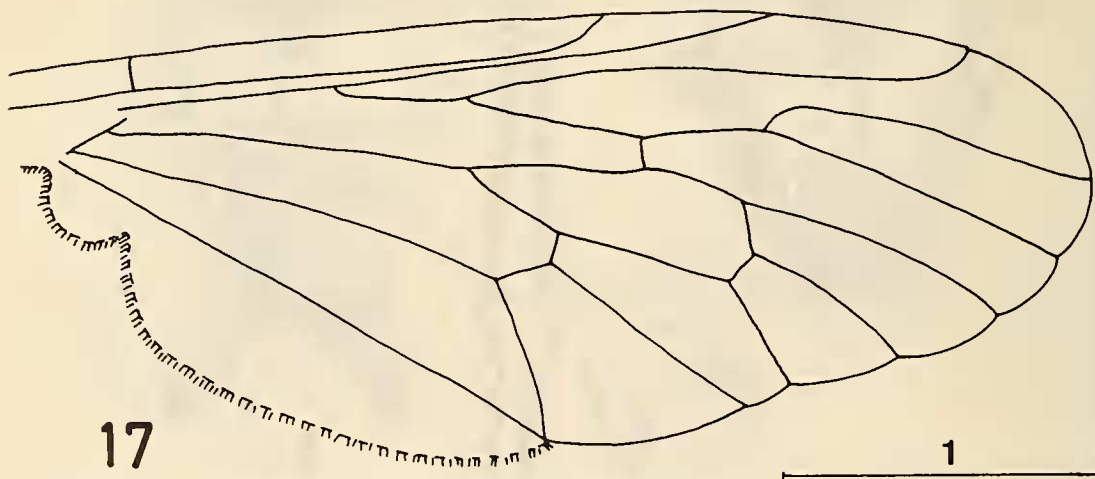
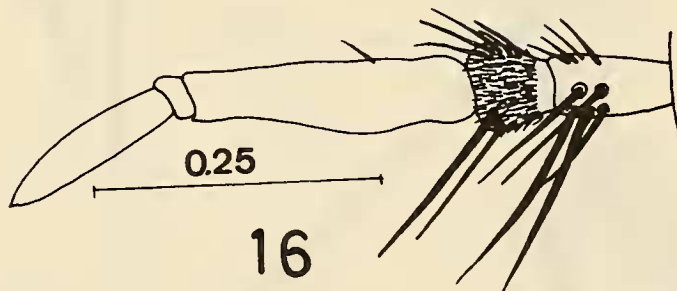
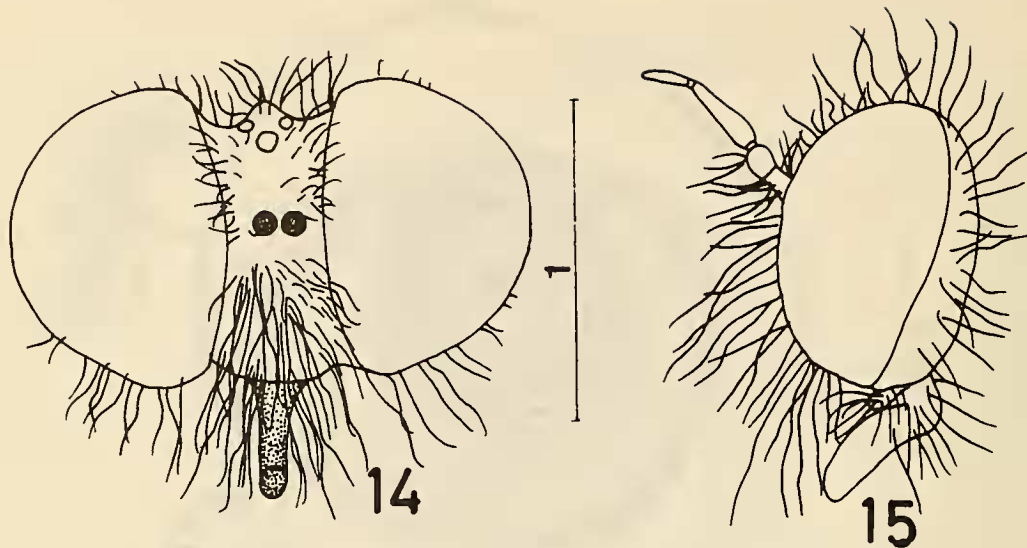
FIGS. 8-9. *Heteropogon dorothyae* Martin. 8, situation of the spermathecae in the abdomen. 9, spermathecae, basal part. (scales in mm).



FIGS 10-11. *Callinicus pollenius* Cole. 10, situation of the spermathecae in the abdomen. 11, spermathecae. (scales in mm).

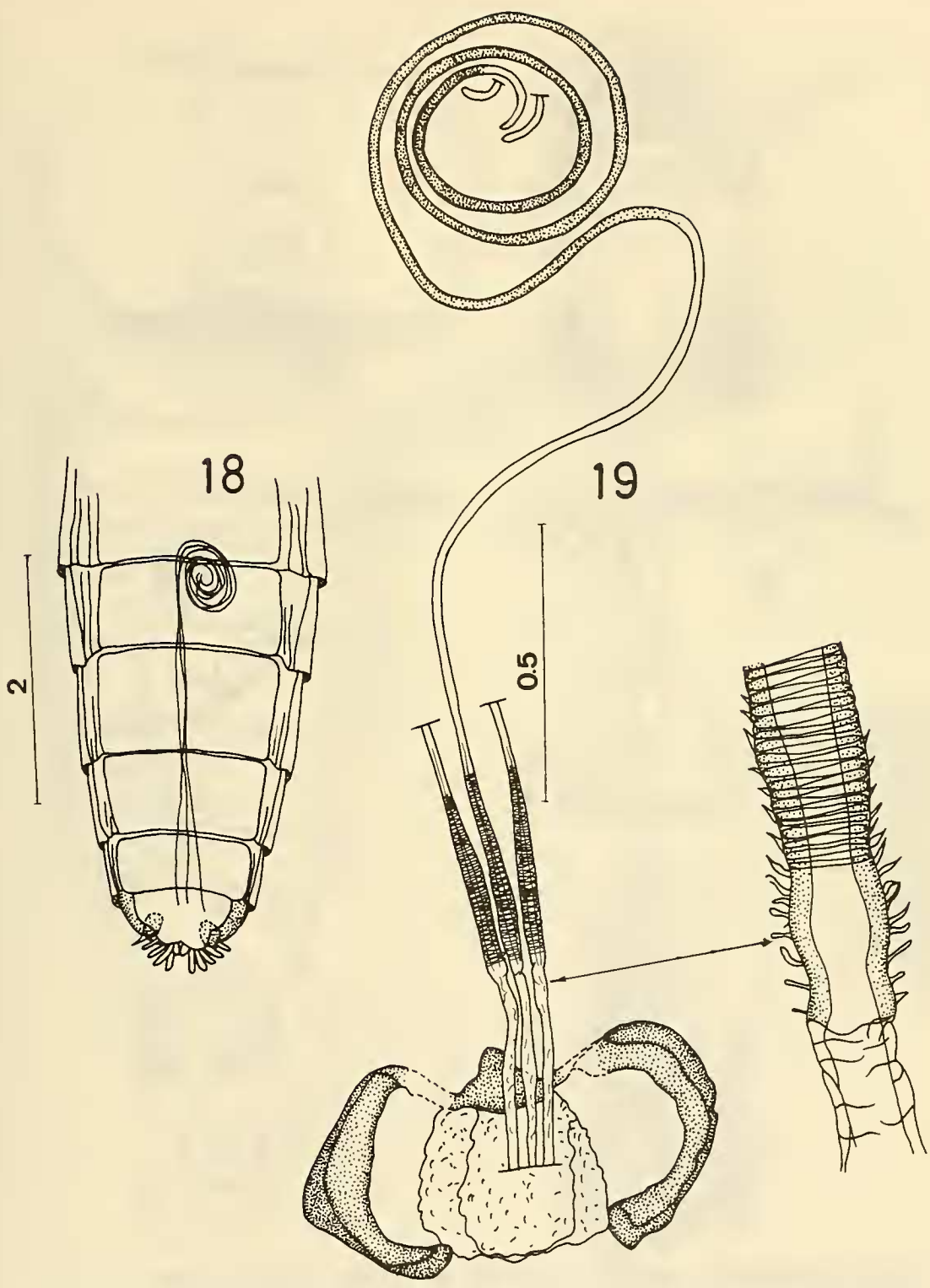


FIGS. 12-13. *Ablautus californicus* Wilcox. 12, situation of the spermathecae in the abdomen. 13, spermathecae. (scales in mm).

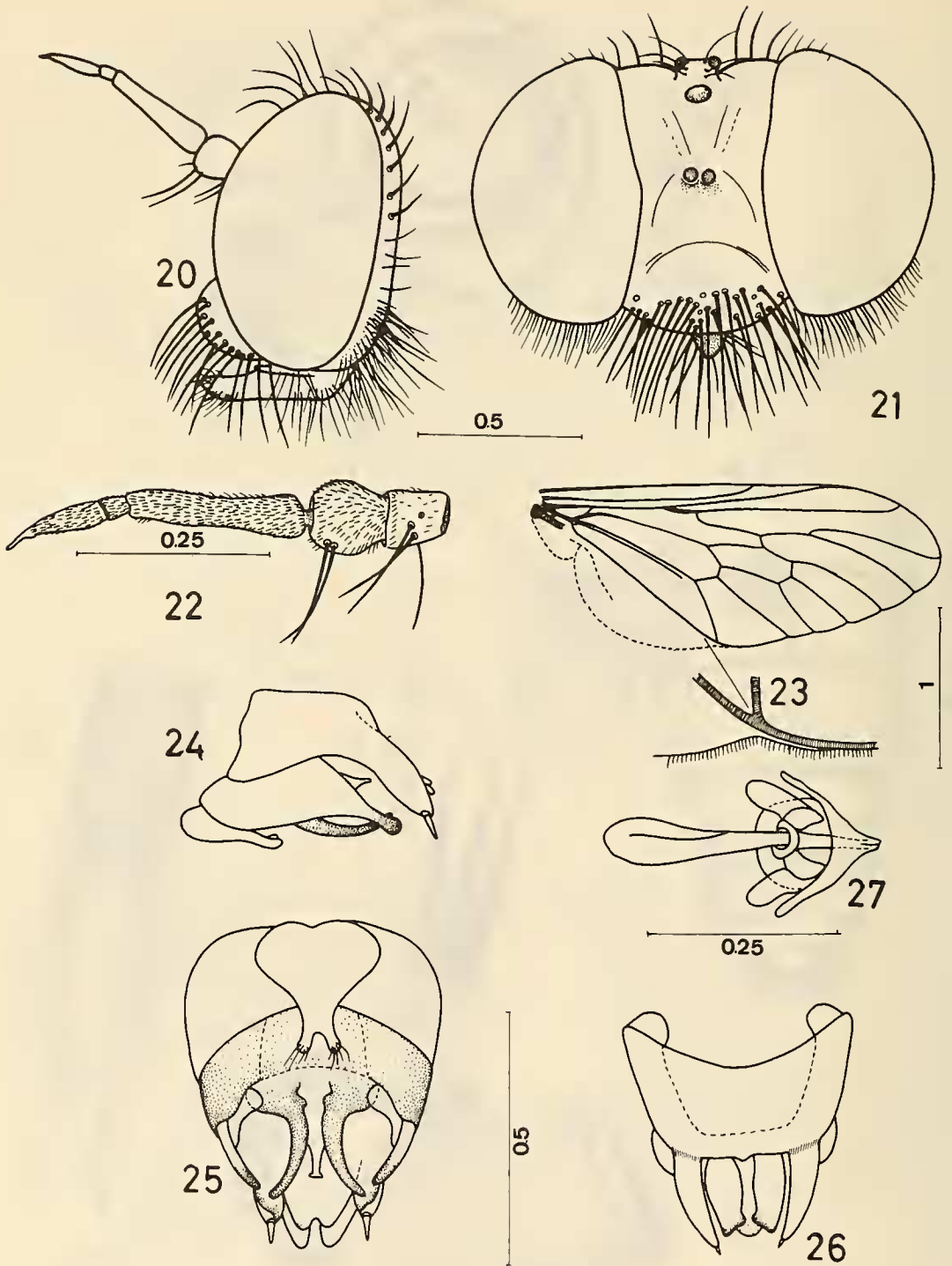


FIGS 14-17. *Nothopogon triangularis*, gen. n., sp. n. 14-15, head in frontal and lateral views. 16, antenna. 17, wing. (scales in mm).

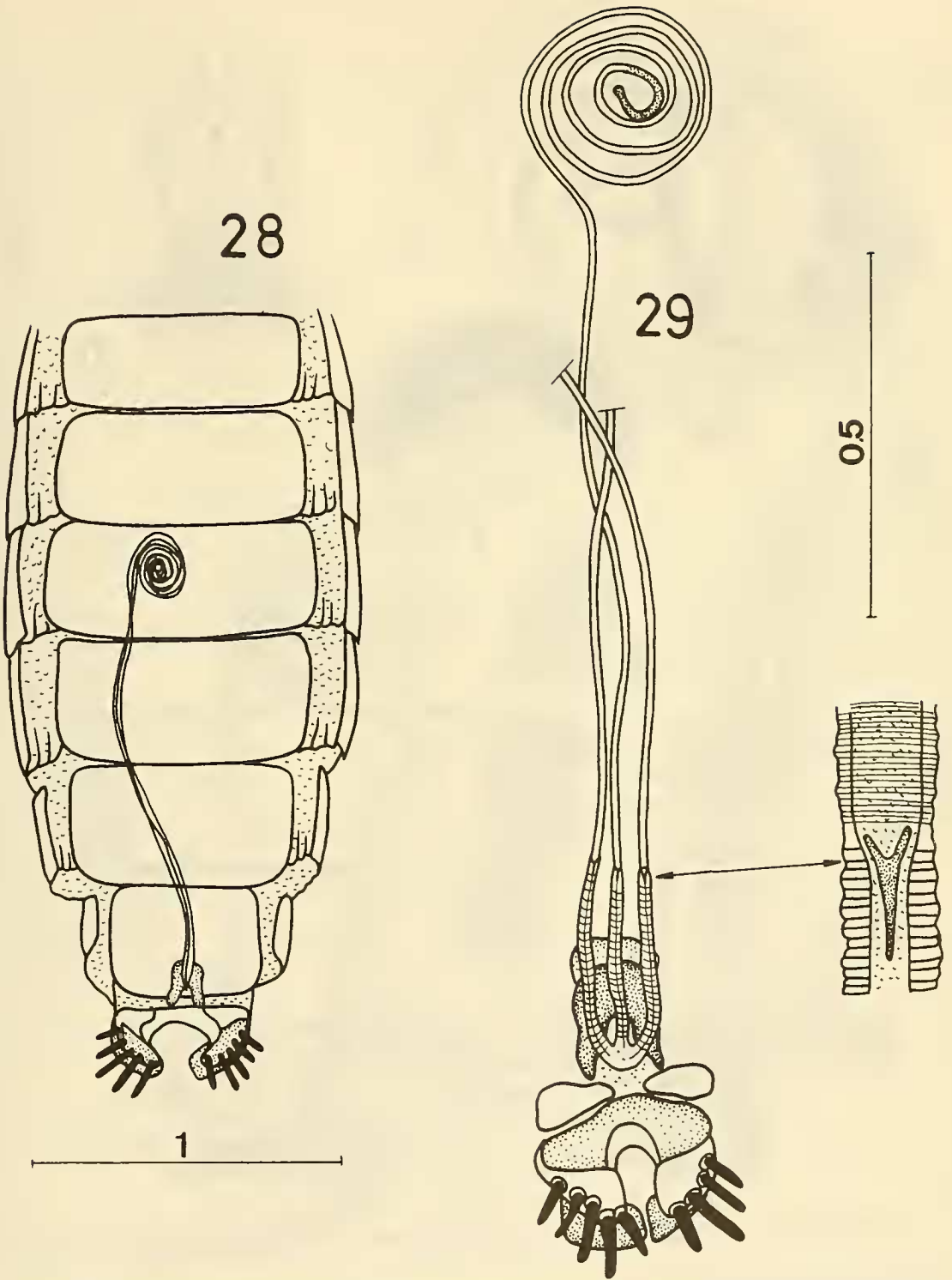




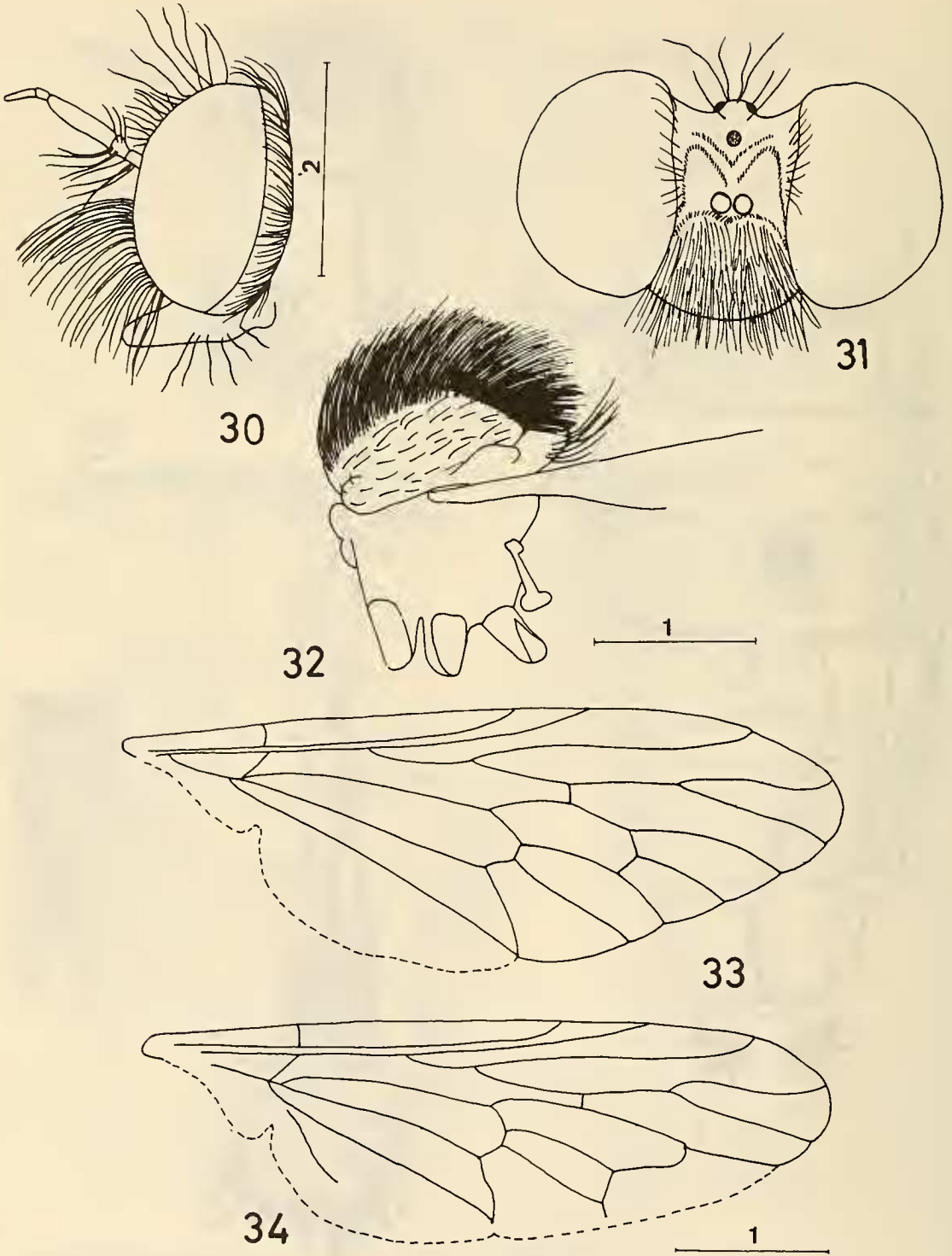
Figs. 18-19. *Itolia maculata* Wilcox. 18, situation of the spermathecae in the abdomen. 19, spermathecae. (scales in mm).



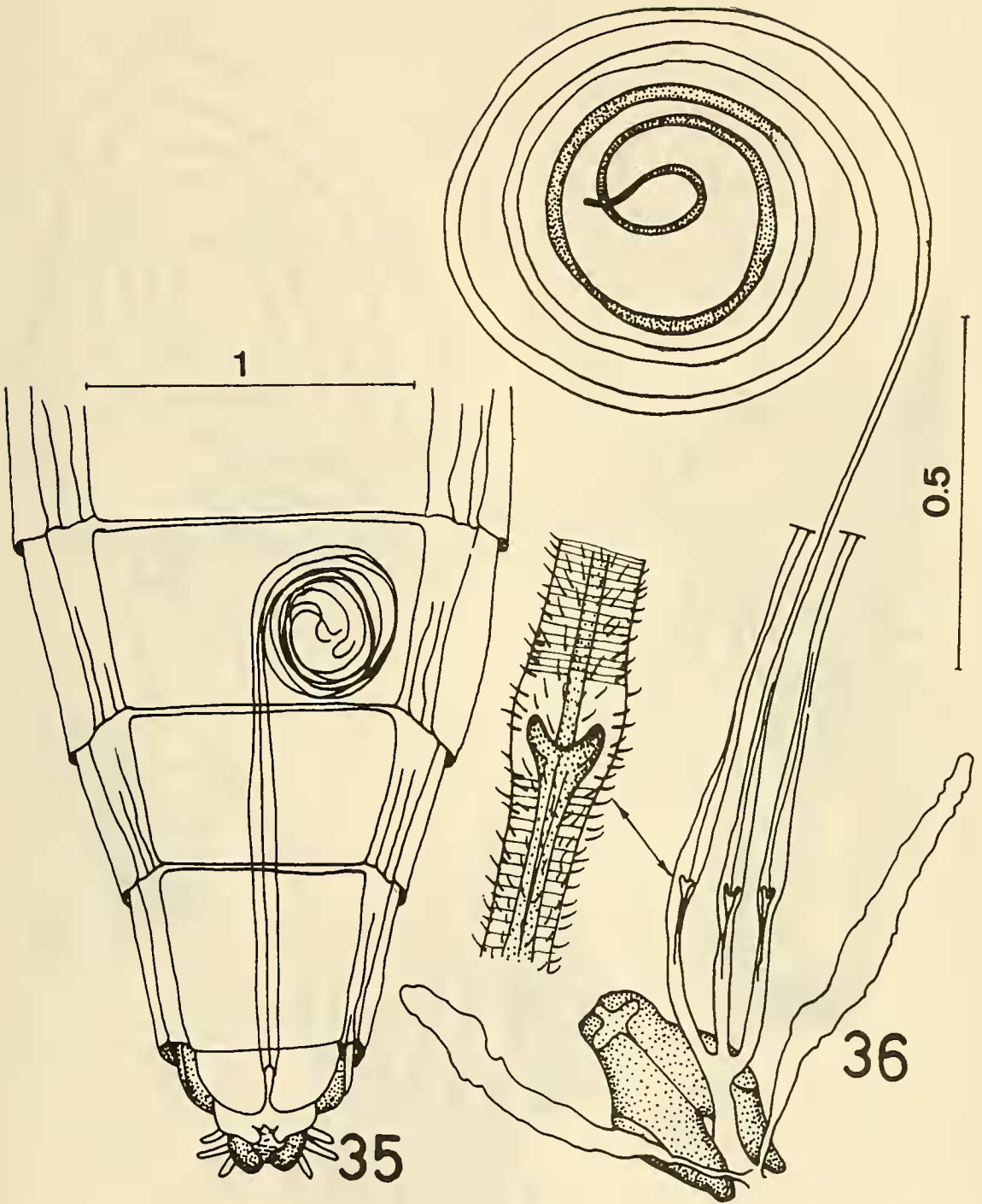
FIGS. 20-27. *Ivettea minuscula* (Artigas). 20-21, head in lateral and frontal views. 22 antenna. 23 wing. 24-26, male terminalia in lateral, ventral and dorsal view. 27, aedeagus in dorsal view. (scales in mm).



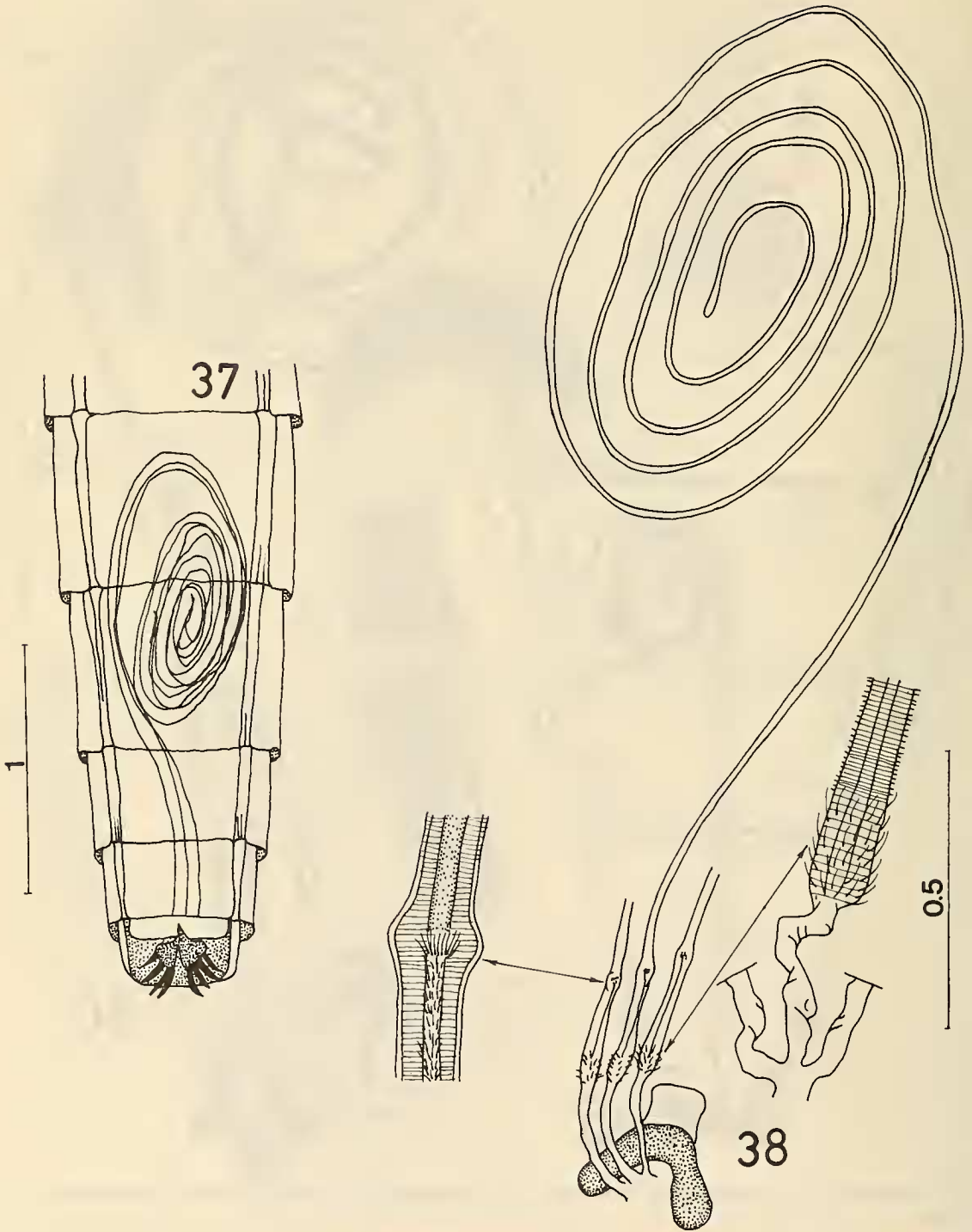
FIGS 28-29. *Ivettea minuscula* (Artigas). 28, situation of the spermathecae in the abdomen, 29, spermathecae. (scales in mm).



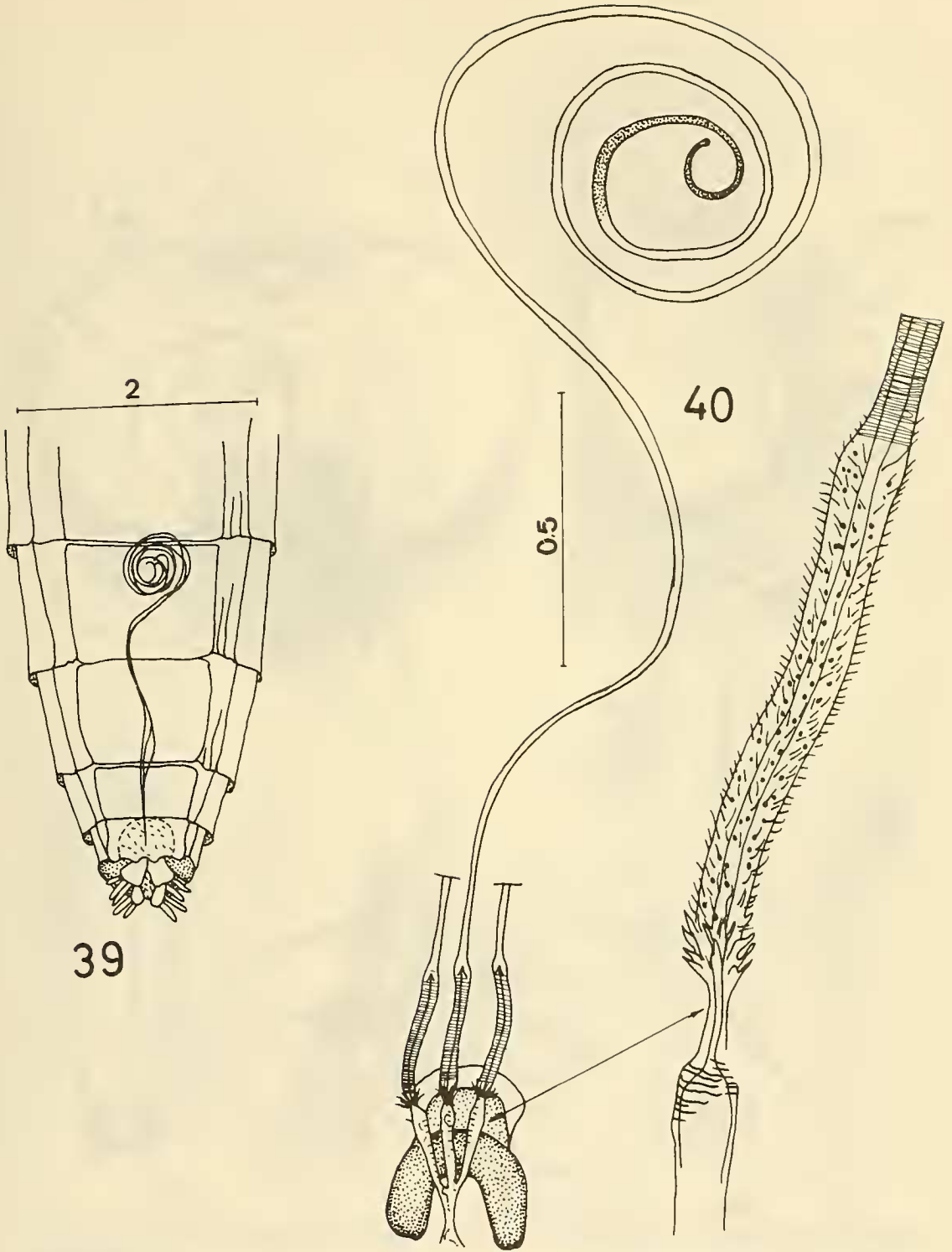
FIGS 30-34. *Dasycyrtus gibbosus* Philippi. 30-31, head in lateral and frontal views. 32, thorax, lateral view. 33, wing, *Itolia atripes* Wilcox. 34, wing. (scales in mm).



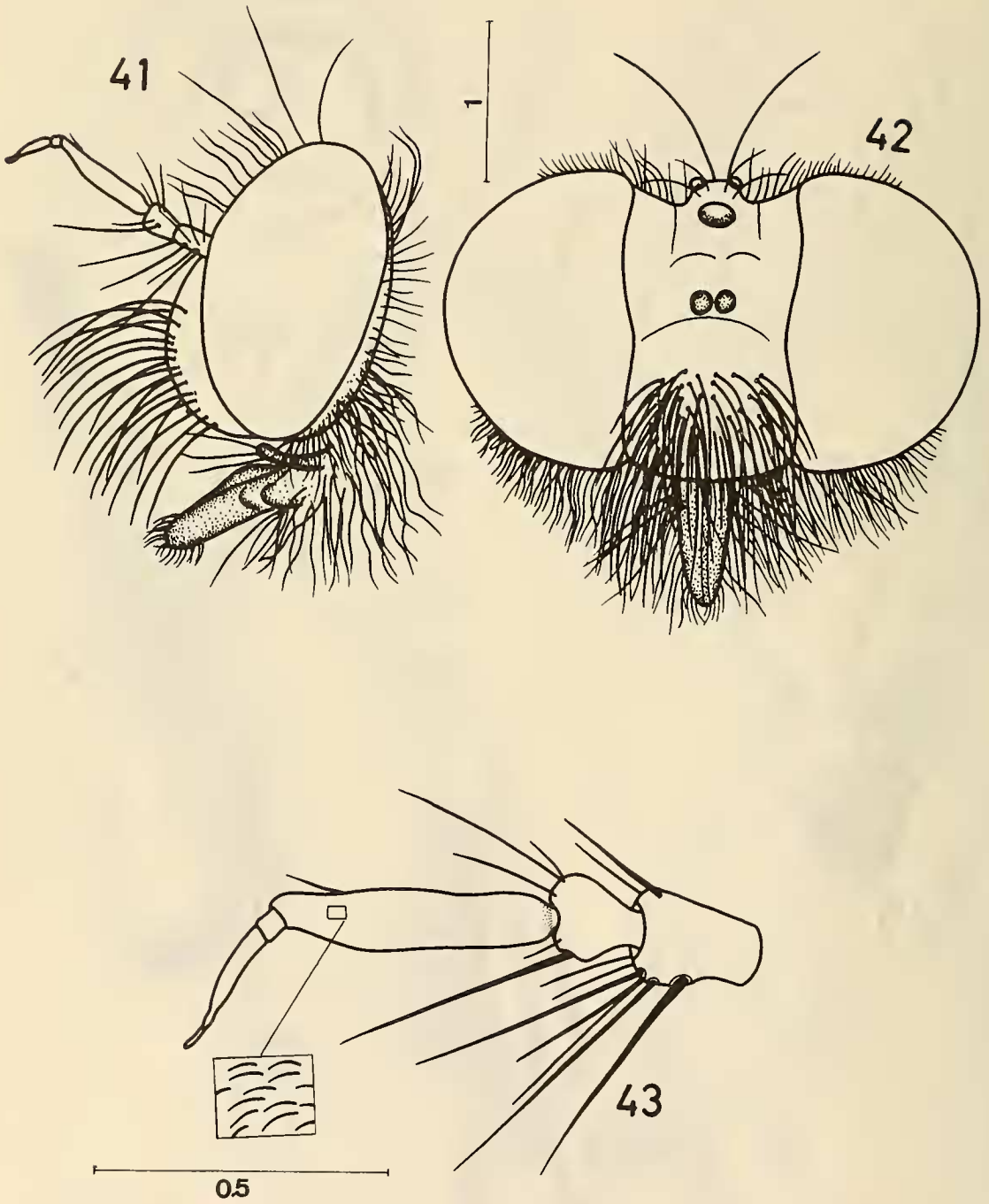
FIGS. 35-36. *Dasycyrtus gibbosus* Philippi. 35. situation of the spermathecae in the abdomen. 36. spermathecae. (scales in mm).



FIGS. 37-38. *Wilcoxia cinerea* James. 37, situation of the spermathecae in the abdomen. 38, spermathecae. (scales in mm).

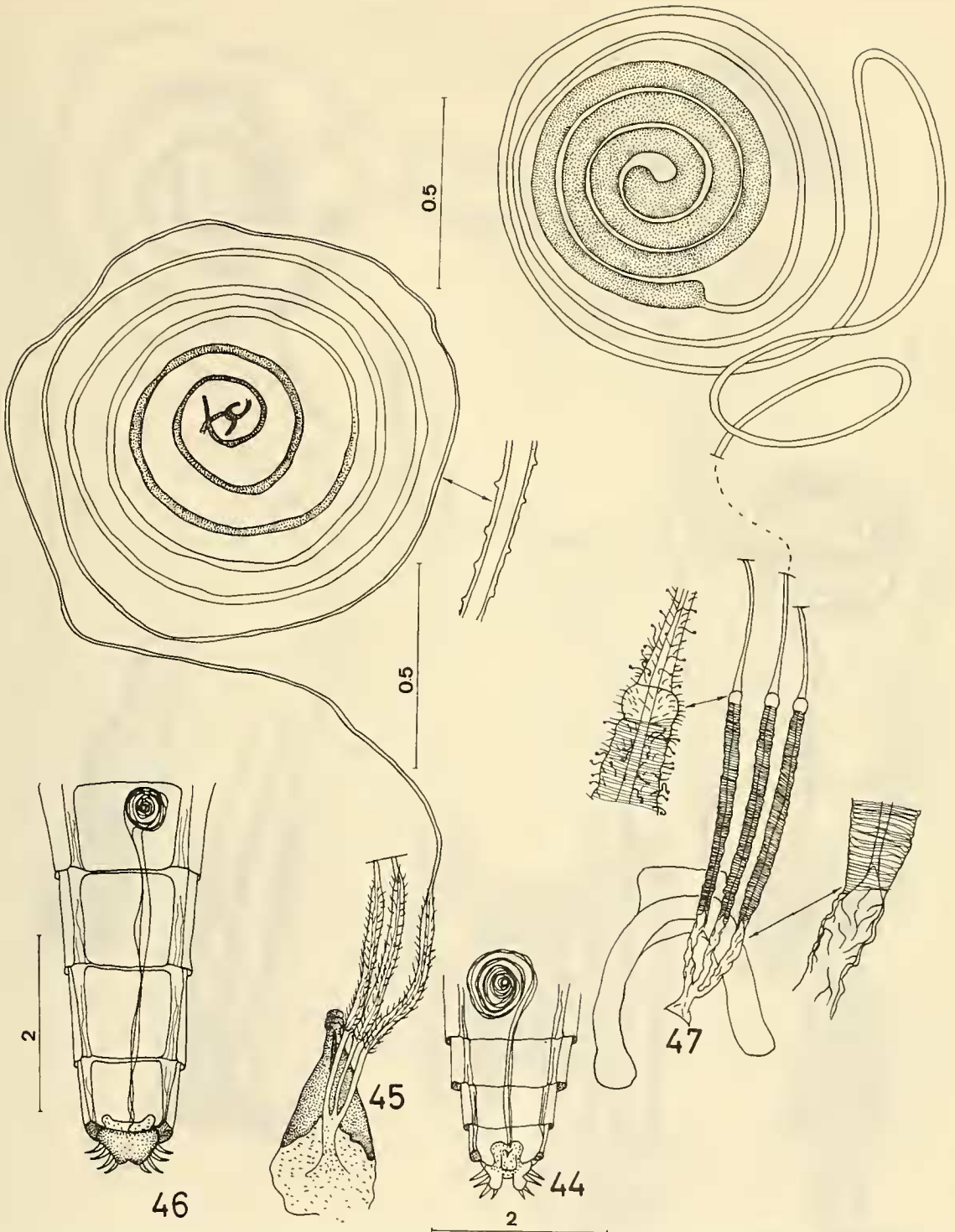


FIGS. 39-40. *Nannocyrtopogon nigricolor* (Coquillett). 39. situation of the spermathecae in the abdomen. 40. spermathecae. (scales in mm).



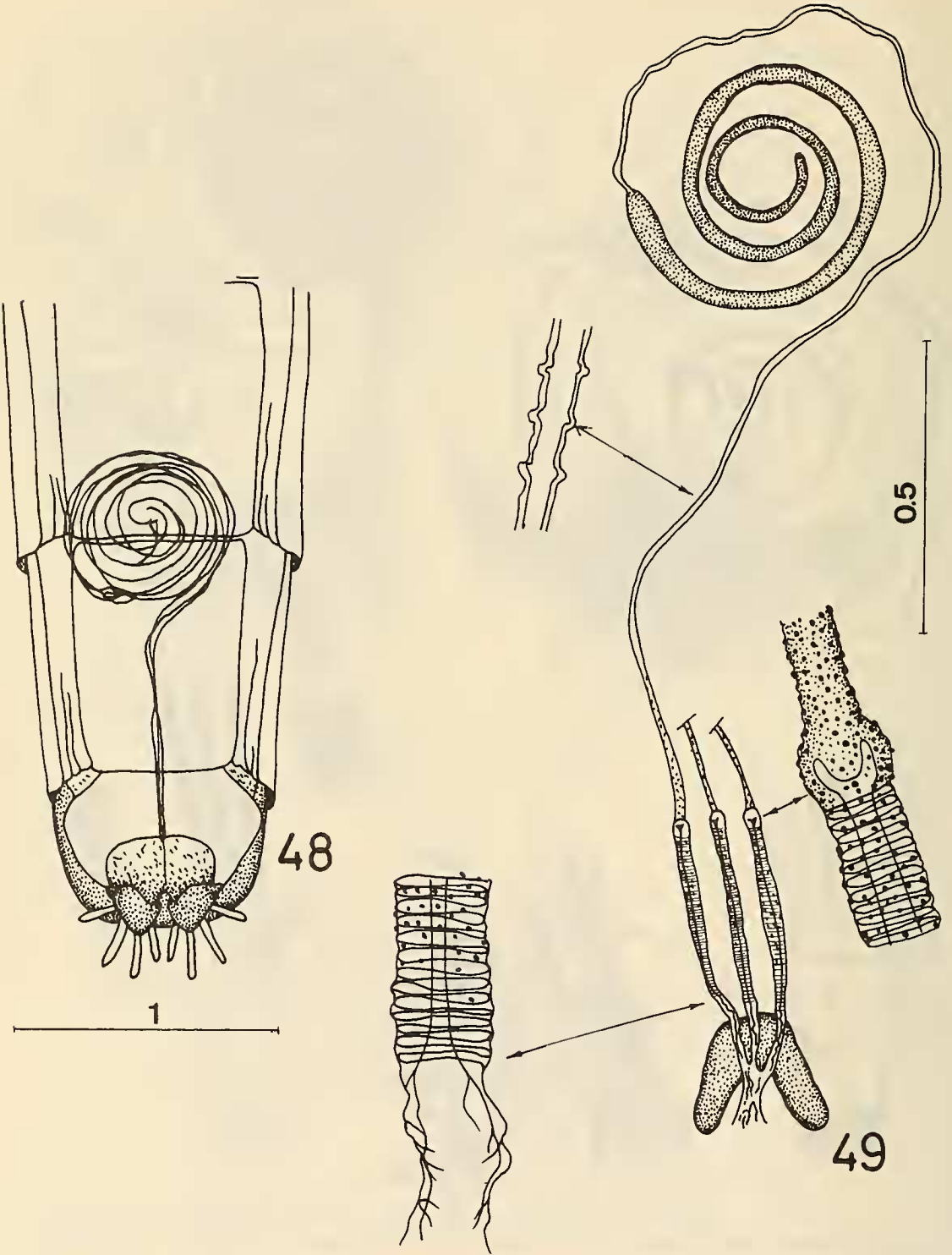
FIGS. 41-43. *Lonquimayus notocinereatus* (Artigas). 41-42, head in lateral and frontal views. 43, antenna. (scales in mm).



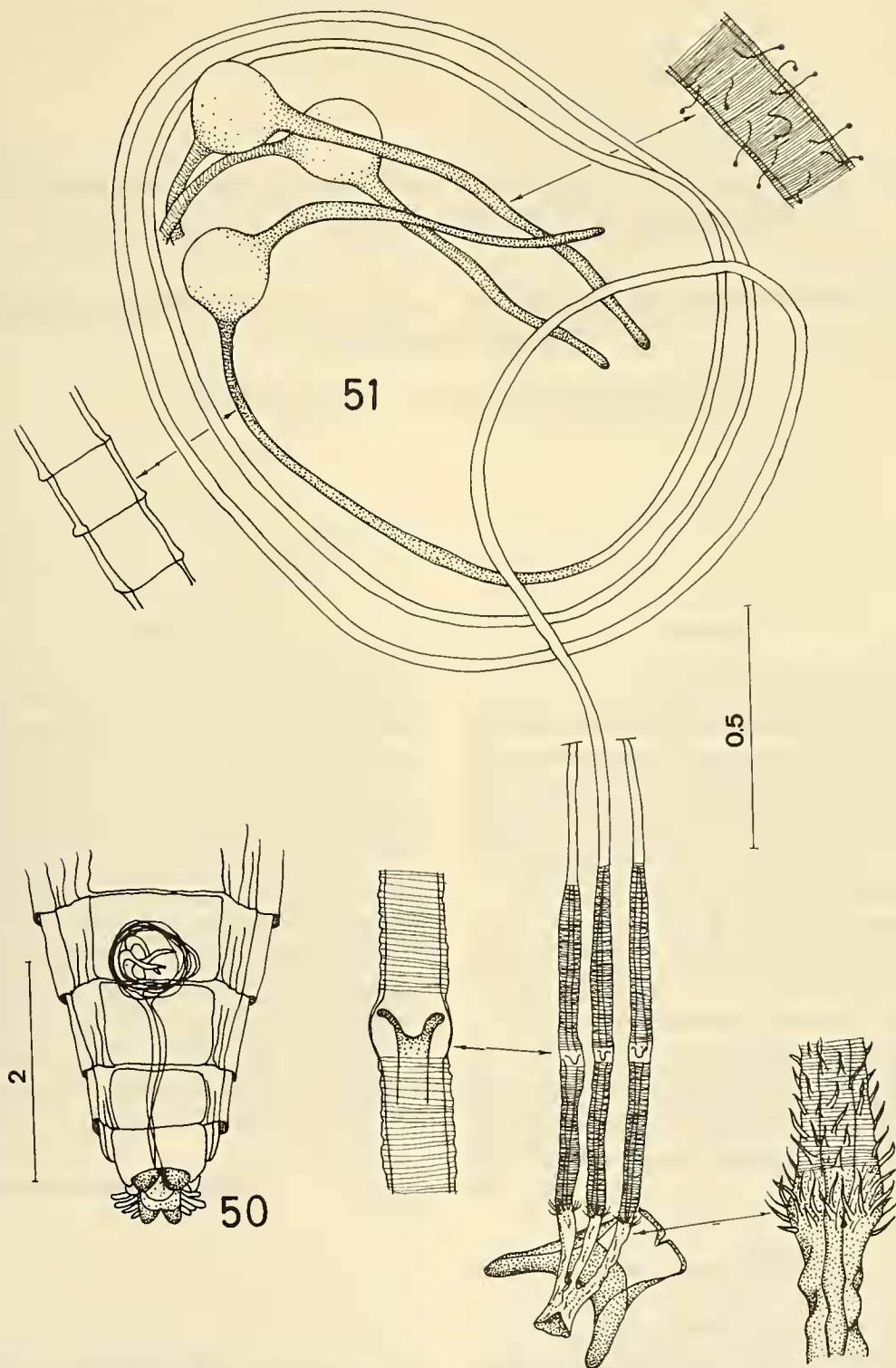


FIGS 44-45. *Backomyia hannai* Wilcox & Martin. 44, situation of the spermathecae in the abdomen. 45, spermathecae. (scales in mm).

FIGS 46-47. *Cyrtopogon basingeri* Wilcox & Martin. 46, situation of the spermathecae in the abdomen. 47, spermathecae. (scales in mm).



FIGS. 48-49. *Metapogon gibber* (Williston). 48, situation of the spermathecae in the abdomen. 49, spermathecae. (scales in mm).



FIGS 50-51. *Eucyrtopogon maculosus* (Coquillett). 50, situation of the spermathecae in the abdomen. 51, spermathecae. (scales in mm).